

CERTIFICATE OF LOCATION OF GOVERNMENT CORNER

NORTH QUARTER Corner of Section 35, Township 108, Range 43, 5TH P.M.

STATE OF MINNESOTA, County of MURRAY

At the corner location shown on the sketch:

On 03-31-2017 found a 3/8" IRON.
DATE

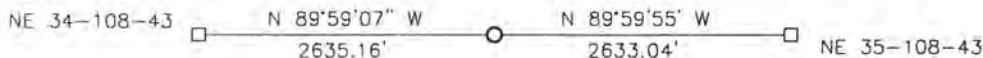
left monument as found, lowered monument, removed monument (explain)

On _____ placed a _____
DATE

SKETCH OF REFERENCE TIES



X
X
X
X



Minnesota State Plane Coordinate
System Murray County Datum
NAD83 (1996)
N: 200690.406
E: 445654.364

Statement of evidence relative to this corner location is on back of page.

I hereby certify that this document and the data contained herein was prepared by me or under my direct supervision

[Signature] 2/16/18
SIGNATURE DATE

Registration No. 43844

- Land Surveyor, Professional Engineer
- County Surveyor, County Engineer

STATE OF MINNESOTA, } ss.
COUNTY OF MURRAY, }

I hereby certify that the within Instrument was filed in this office for record on the 26TH day of MARCH A.D. 20 18 at 9:00 o'clock A. M. and was duly recorded as Document No. _____

Evelyn C. Larson
County Recorder

Statement of Evidence

In 1866, J.W. Bishop did the original subdivision of the township.

On August 24, 1901, (No name) County Surveyor, set a stone on line between the section corners and in line with the north and south fence lines.

On April 8, 1980, Gary Martin set a 3/8" iron over a stone.

On March 31, 2017, Bueltel-Moseng Land Surveying found a 3/8" iron at the corner.